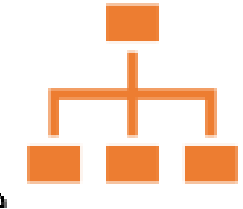
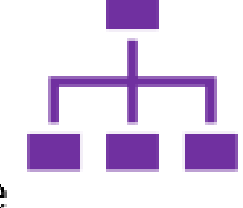
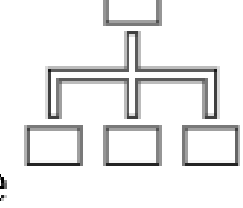
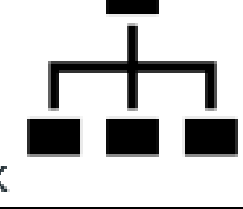
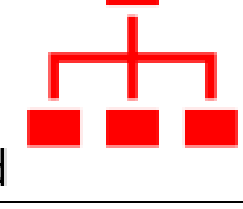
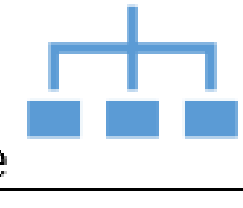
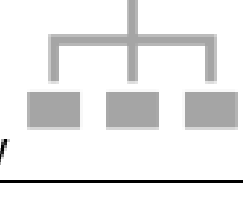
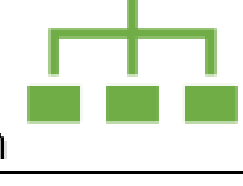
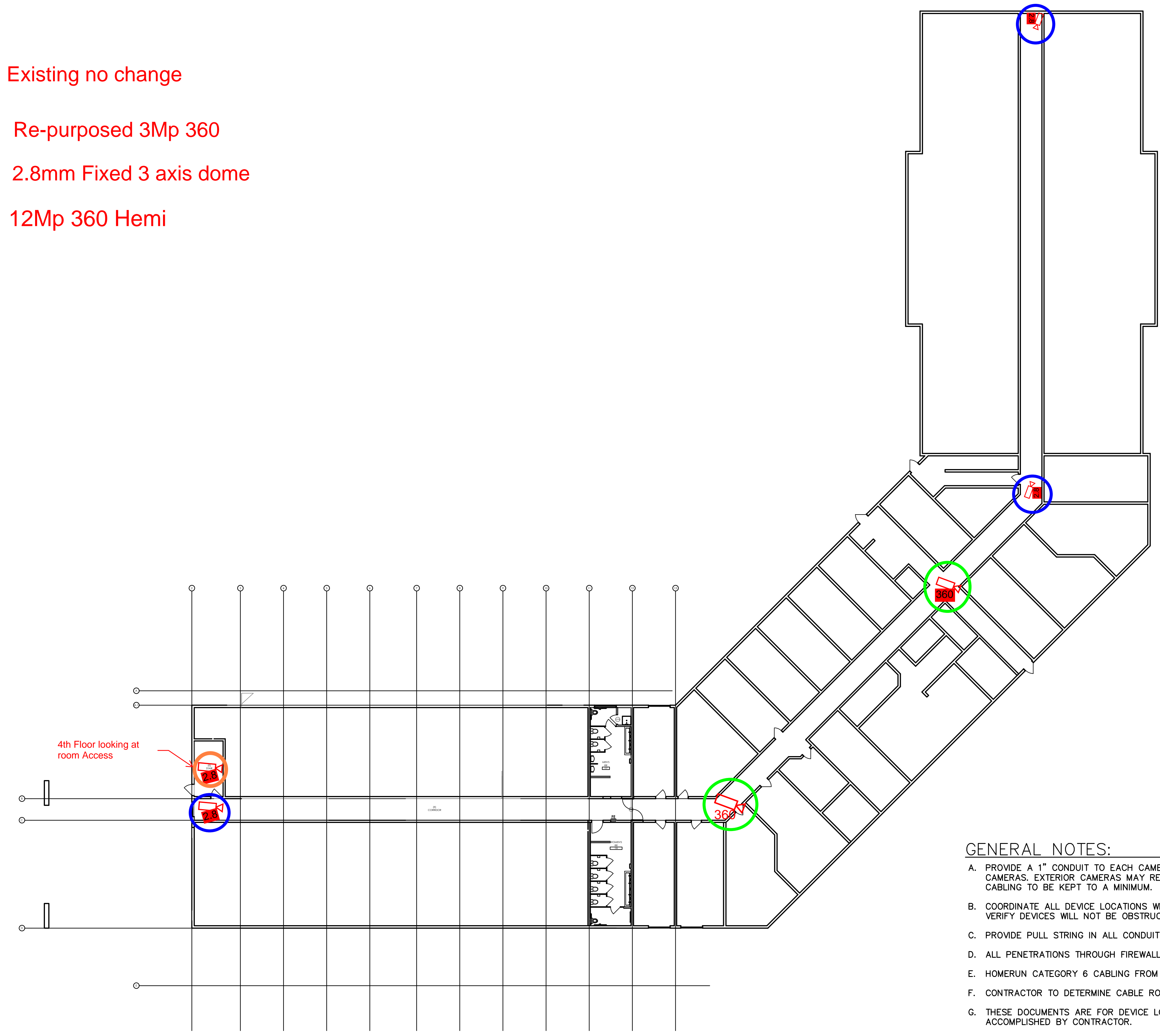


# Oxford Network Cable Color Standard



- Existing no change
- Re-purposed 3Mp 360
- 2.8mm Fixed 3 axis dome
- 12Mp 360 Hemi

Cable/ Jack Color	Usage
Orange 	WiFi access points
Purple 	IP cameras
White 	Guest network access
Black 	Corporate network access
Red 	ISP Internet feed
Blue 	SAN Storage
Gray 	Server
Green 	Analog Phone



- GENERAL NOTES:**
- A. PROVIDE A 1" CONDUIT TO EACH CAMERA LOCATION FROM ACCESSIBLE CEILING FOR INTERIOR CAMERAS. EXTERIOR CAMERAS MAY REQUIRE SURFACE MOUNT CONDUIT. ALL EXPOSED CABLING TO BE KEPT TO A MINIMUM.
  - B. COORDINATE ALL DEVICE LOCATIONS WITH LATEST ARCHITECTURAL INTERIOR ELEVATIONS TO VERIFY DEVICES WILL NOT BE OBSTRUCTED.
  - C. PROVIDE PULL STRING IN ALL CONDUITS FOR LATER USE.
  - D. ALL PENETRATIONS THROUGH FIREWALLS WILL NEED FIRESTOP OF THE APPROPRIATE RATING.
  - E. HOMERUN CATEGORY 6 CABLING FROM 4TH DATA ROOM TO ALL EXTERIOR CAMERAS.
  - F. CONTRACTOR TO DETERMINE CABLE ROUTING DURING PRE-BID WITH OWNER.
  - G. THESE DOCUMENTS ARE FOR DEVICE LOCATIONS AND CCTV, OTHER DESIGN WILL NEED TO BE ACCOMPLISHED BY CONTRACTOR.

Date: 11-17-17	Proj No: 9504	Drawn By: GMA	Chkd By: GMA	DSGN By: GMA	Acad File: 504-T3.3
----------------	---------------	---------------	--------------	--------------	---------------------

OXFORD SUITES  
 12226 N JANTZEN DRIVE  
 PORTLAND OREGON  
 TELCOM OVERALL 2nd - 4th Floors Plan



Consulting Engineers  
 2007 S.E. Ash St.  
 Portland, OR 97214  
 PHN: (503) 234-0548  
 FAX: (503) 234-0677  
 WWW.MFI-ENG.COM