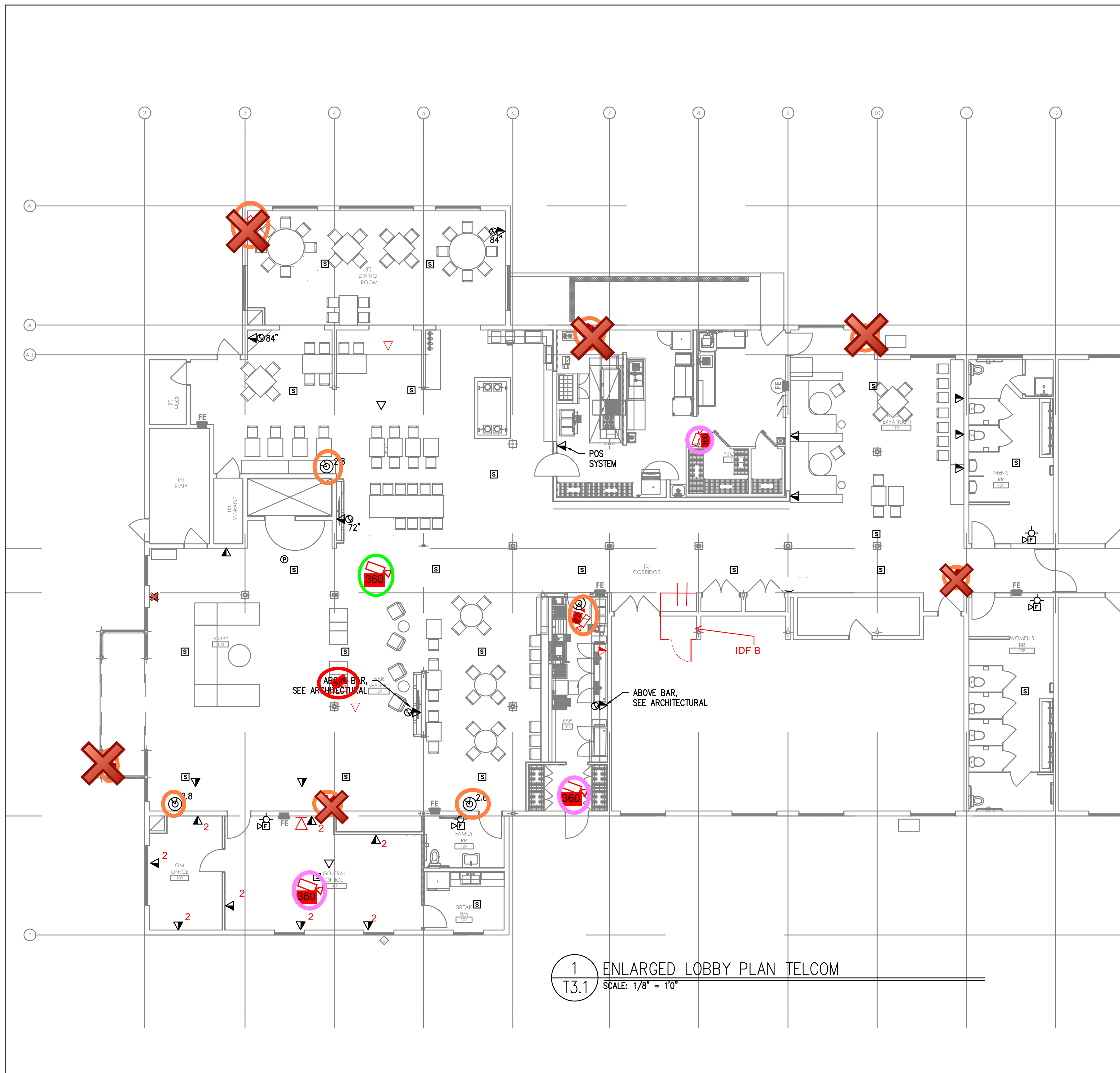


Oxford Network Cable Color Standard

Cable/ Jack Color	Usage
Orange	WiFi access points
Purple	IP cameras
White	Guest network access
Black	Corporate network access
Red	ISP Internet feed
Blue	SAN Storage
Gray	Server
Green	Analog Phone

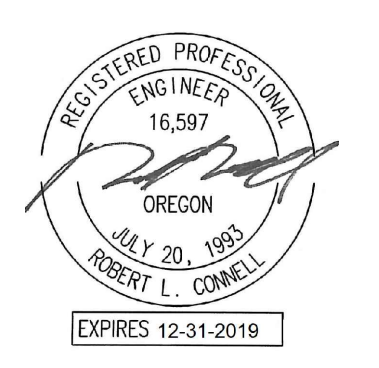
- Existing no change
- Re-purposed 3Mp 360
- 2.8mm Fixed 3 axis dome
- 12Mp 360 Hemi
- Zoom 4Mp



1 ENLARGED LOBBY PLAN TELCOM
T3.1 SCALE: 1/8" = 10"

GENERAL NOTES:

- A. FOR VOICE/DATA OUTLETS PROVIDE A SINGLE GANG MUD-RING WITH A 1" CONDUIT FROM THE TOP OF THE MUD-RING TO ACCESSIBLE CEILING SPACE. TERMINATE CONDUIT WITH END CONNECTORS AND THREAD ON PLASTIC BUSHING FOR CABLE PROTECTION. OUTLET SHALL BE AT THE SAME HEIGHT AS ADJACENT POWER OUTLET AND LESS THAN 18" SEPARATION. COORDINATE WITH ELECTRICAL.
- B. COORDINATE ALL DEVICE LOCATIONS WITH LATEST ARCHITECTURAL INTERIOR ELEVATIONS TO VERIFY DEVICES WILL NOT BE OBSTRUCTED.
- C. PROVIDE PULL STRING IN ALL CONDUITS FOR LATER USE.
- D. ALL PENETRATIONS THROUGH FIREWALLS WILL NEED FIRESTOP OF THE APPROPRIATE RATING.
- E. HOMERUN CATEGORY 6 CABLING FROM 4TH DATA ROOM TO ALL CCTV CAMERAS.
- F. CONTRACTOR TO DETERMINE CABLE ROUTING DURING PRE-BID WITH OWNER.
- G. THESE DOCUMENTS ARE FOR DEVICE LOCATIONS AND CCTV CABLING, OTHER DESIGN WILL NEED TO BE ACCOMPLISHED BY CONTRACTOR.



Date: 11-17-17
 Proj No: 9504
 Drawn By: GMA
 Chkd By: GMA
 DSGN By: GMA
 Acad File#04-T3.1

OXFORD SUITES
 12226 N JANITZEN DRIVE
 PORTLAND, OREGON
 ENLARGED LOBBY TELCOM PLAN



Consulting Engineers
 2007 S.E. Ash St.
 Portland, OR 97214
 PHN: (503) 234-0548
 FAX: (503) 234-0677
 WWW.MFIA-ENG.COM

SHEET
T3.1
 OF 4