

# Attachment B

## John Day DMV Camera Layout

**ESB -John Day DMV**

<b>BID Drawing Camera #</b>	<b>Camera Location</b>	<b>Camera Label</b>	<b>Camera Type</b>	<b>Accessories</b>	<b>Project Notes</b>
1	Customer Parking	R5_L8120101_CustPark	PNM-9030V	Ext.WallMount/VandalCover/ Weather Cover	180 Degree
2	Back Exit	R5_L8120101_BackExit	PNM-9030V	Ext.WallMount/VandalCover/ Weather Cover	180 Degree
3	Customer Entrance	R5_L8120101_CustEnt	PNV-9080R	Ceiling Mount	12 MP
4	Test Center	R5_L8120101_TestCent	PNV-9080R	Ceiling Mount	12 MP
5	Service Counter	R5_L8120101_ServCount	PNM-9030V	Ceiling Mount/Mask Counters	180 Degree
6	Report Room	R5_L8120101_ReportRM	PNF-9010R	Ceiling Mount	Fish Eye

# Exterior Overview



# Camera 1



Model: Hanwha PNM-9030V    Resolution: 6096x2540  
HFoV: 180°    Distance: 32ft    Width: 101.6ft    PPF: 60.0  
Imager: 1/2.8"    Focal Length: 4mm    Camera Height: 10.00ft    Tilt: 0.00°    Scene Height: 10.00ft



Day - Ideal

Dark No IR ▾



60.0 ppf  
32 ft  
Away

Warning results may vary depending on light and camera



# Front Parking Camera



PRICE-EASTBURN Dianna A

# Camera 2



Model: Hanwha PNM-9030V    Resolution: 6096x2540  
HFoV: 180°    Distance: 32ft    Width: 101.6ft    PPF: 60.0  
Imager: 1/2.8"    Focal Length: 4mm    Camera Height: 10.00ft    Tilt: 0.00°    Scene Height: 10.00ft



Day - Ideal

Dark No IR ▾



60.0 ppf  
32 ft  
Away  
Warning results may vary depending on light and camera

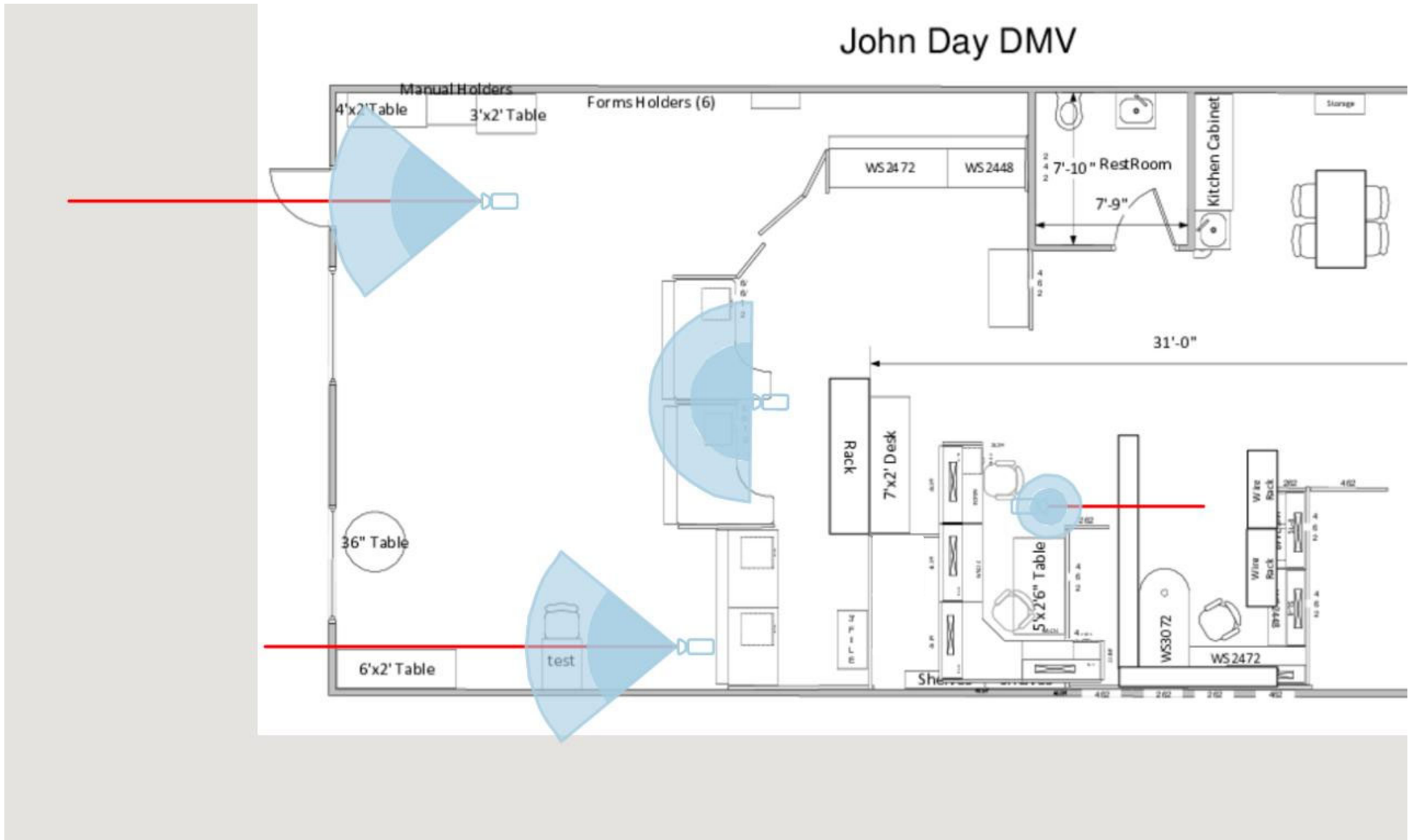


# Back Exit Camera



PRICE-EASTBURN Dianna A

# Interior Overview



# Camera 3



Model: Hanwha PND-9080R

Resolution: 12MP

HFoV: 80°

Distance: 48ft

Width: 66.7ft

PPF: 60.0

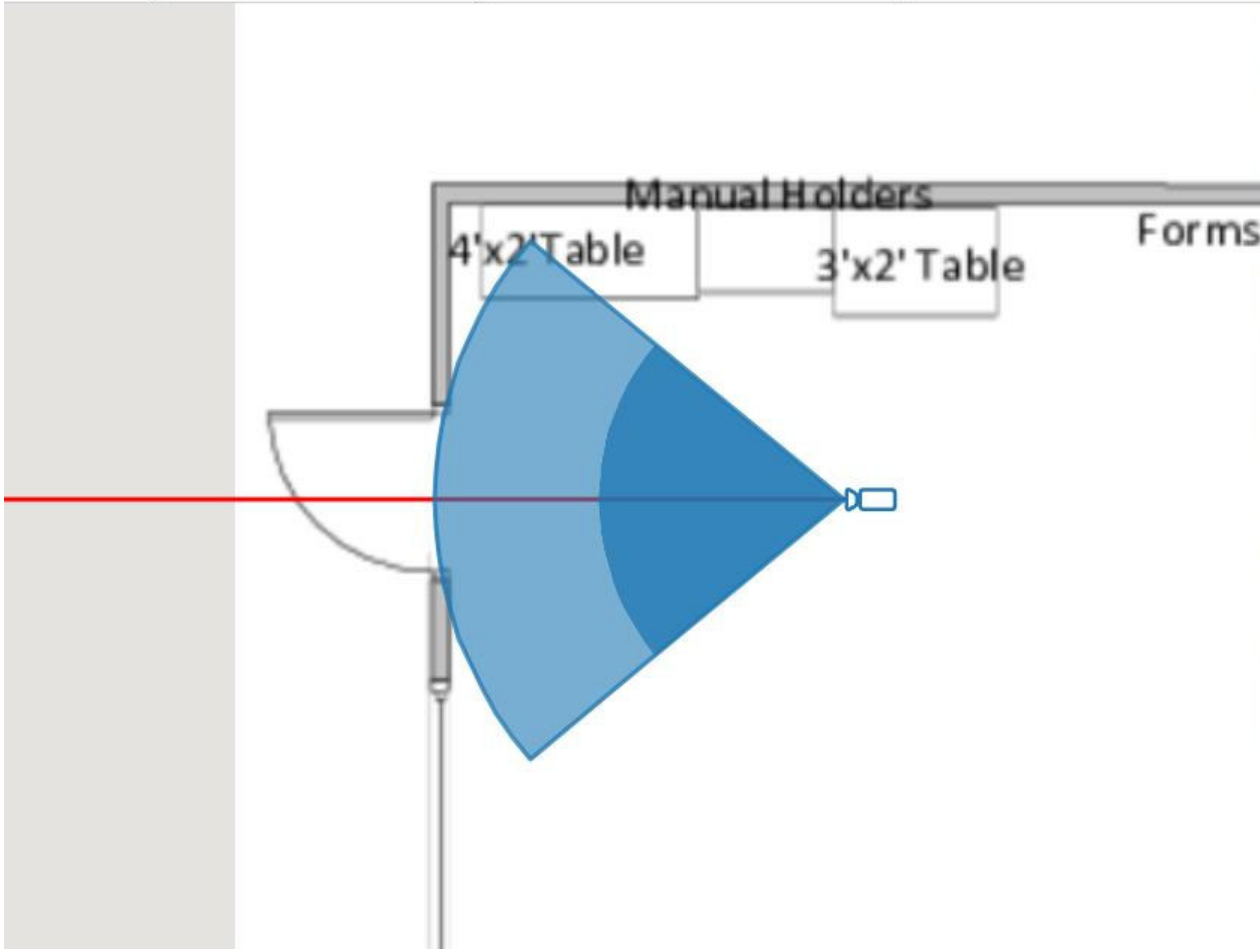
Imager: 1/1.7"

Focal Length: 4.5 - 10mm

Camera Height: 10.00ft

Tilt: 0.00°

Scene Height: 10.00ft



Day - Ideal

Dark With IR

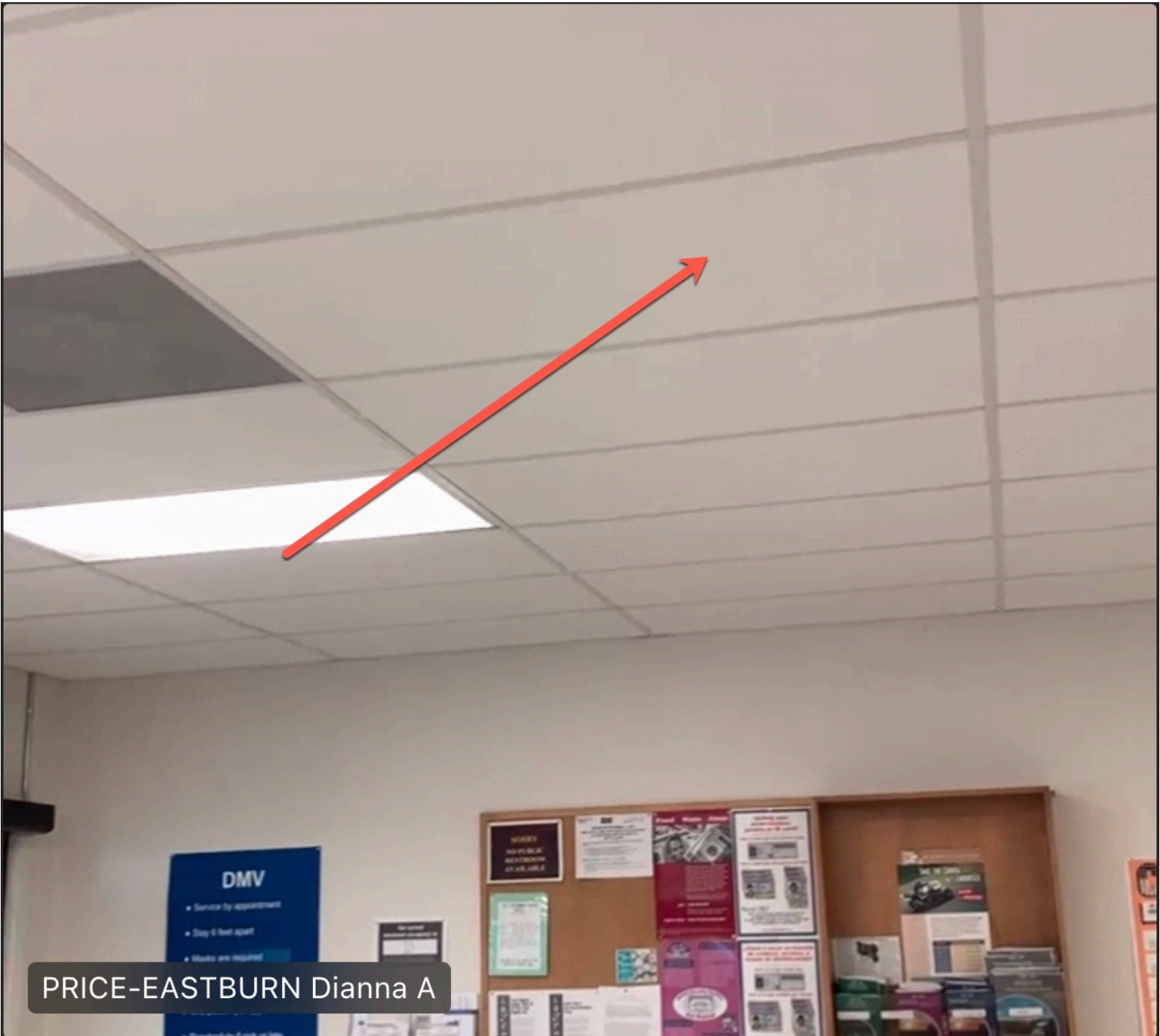


60.0 ppf  
48 ft  
Away

Warning results may vary depending on light and camera



# Entrance Monitor



PRICE-EASTBURN Dianna A

# Camera 4



Model: Hanwha PND-9080R

Resolution: 12MP

HFoV: 80°

Distance: 48ft

Width: 66.7ft

PPF: 60.0

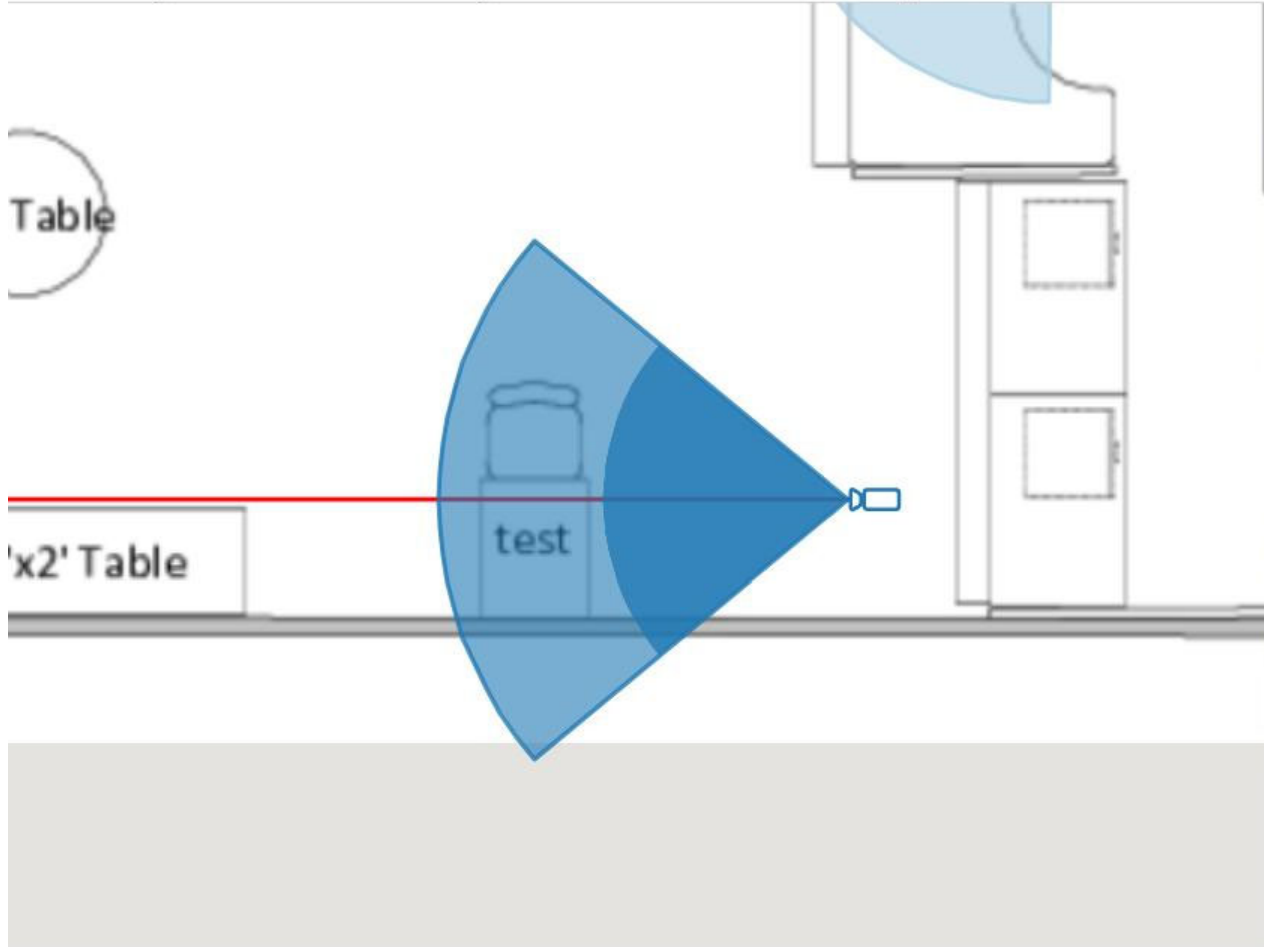
Imager: 1/1.7"

Focal Length: 4.5 - 10mm

Camera Height: 10.00ft

Tilt: 0.00°

Scene Height: 10.00ft



Day - Ideal

Dark With IR

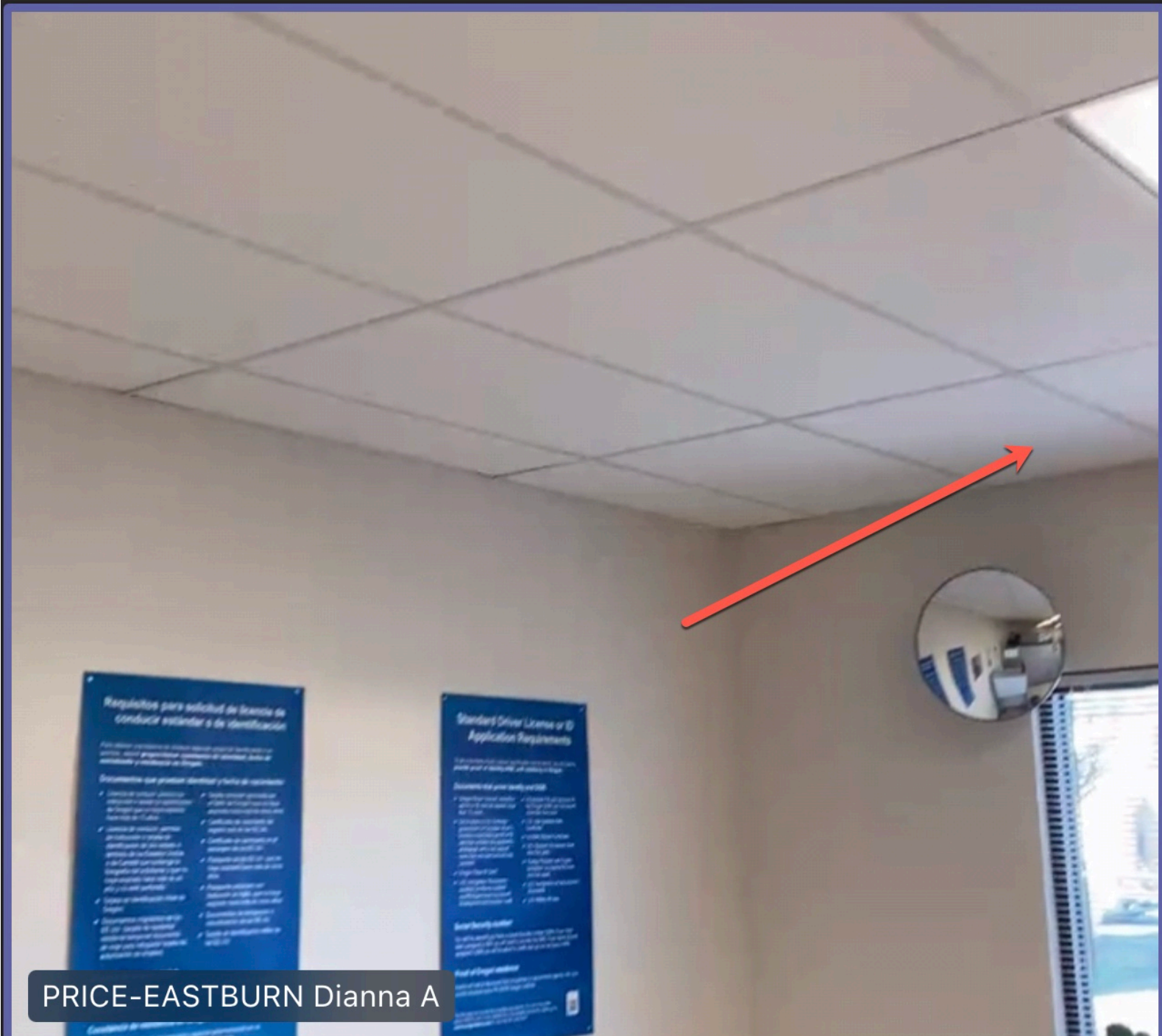


60.0 ppf  
48 ft  
Away

Warning results may vary depending on light and camera



# Testing Camera

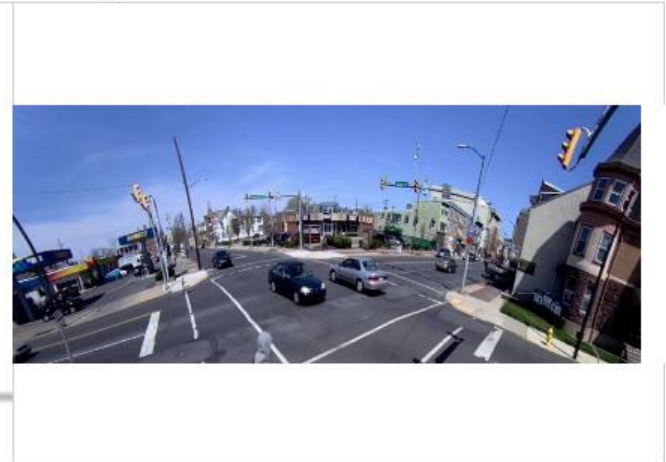
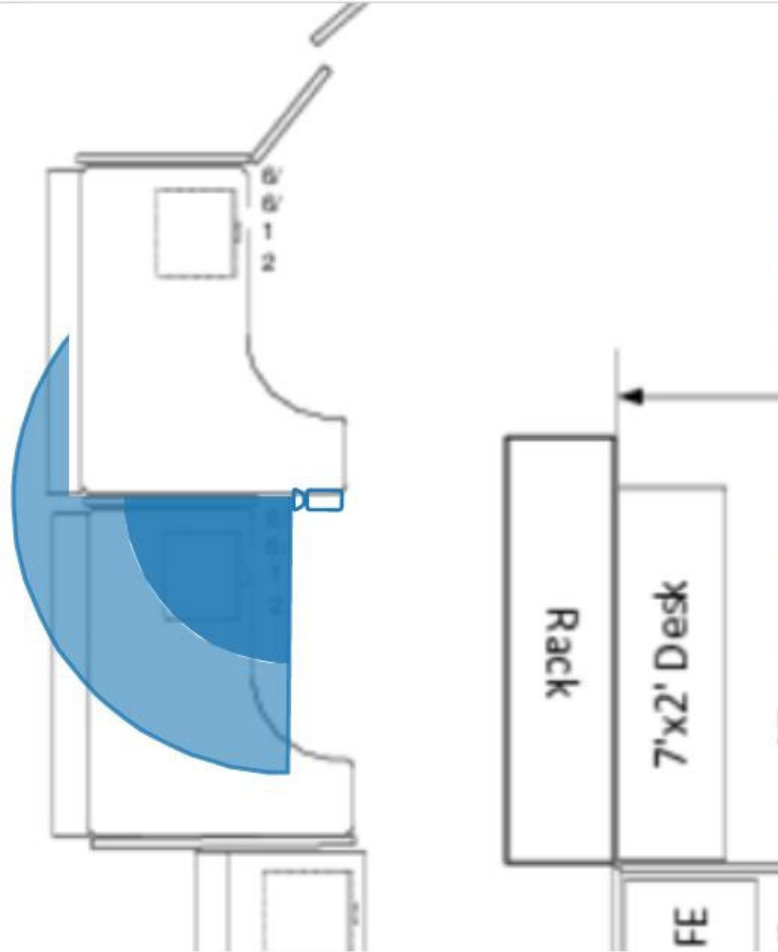


PRICE-EASTBURN Dianna A

# Camera 5



Model: Hanwha PNM-9030V    Resolution: 6096x2540  
HFoV: 180°    Distance: 32ft    Width: 101.6ft    PPF: 60.0  
Imager: 1/2.8"    Focal Length: 4mm    Camera Height: 10.00ft    Tilt: 0.00°    Scene Height: 10.00ft



Day - Ideal

Dark No IR ▾



60.0 ppf  
32 ft  
Away



Warning results may vary depending on light and camera

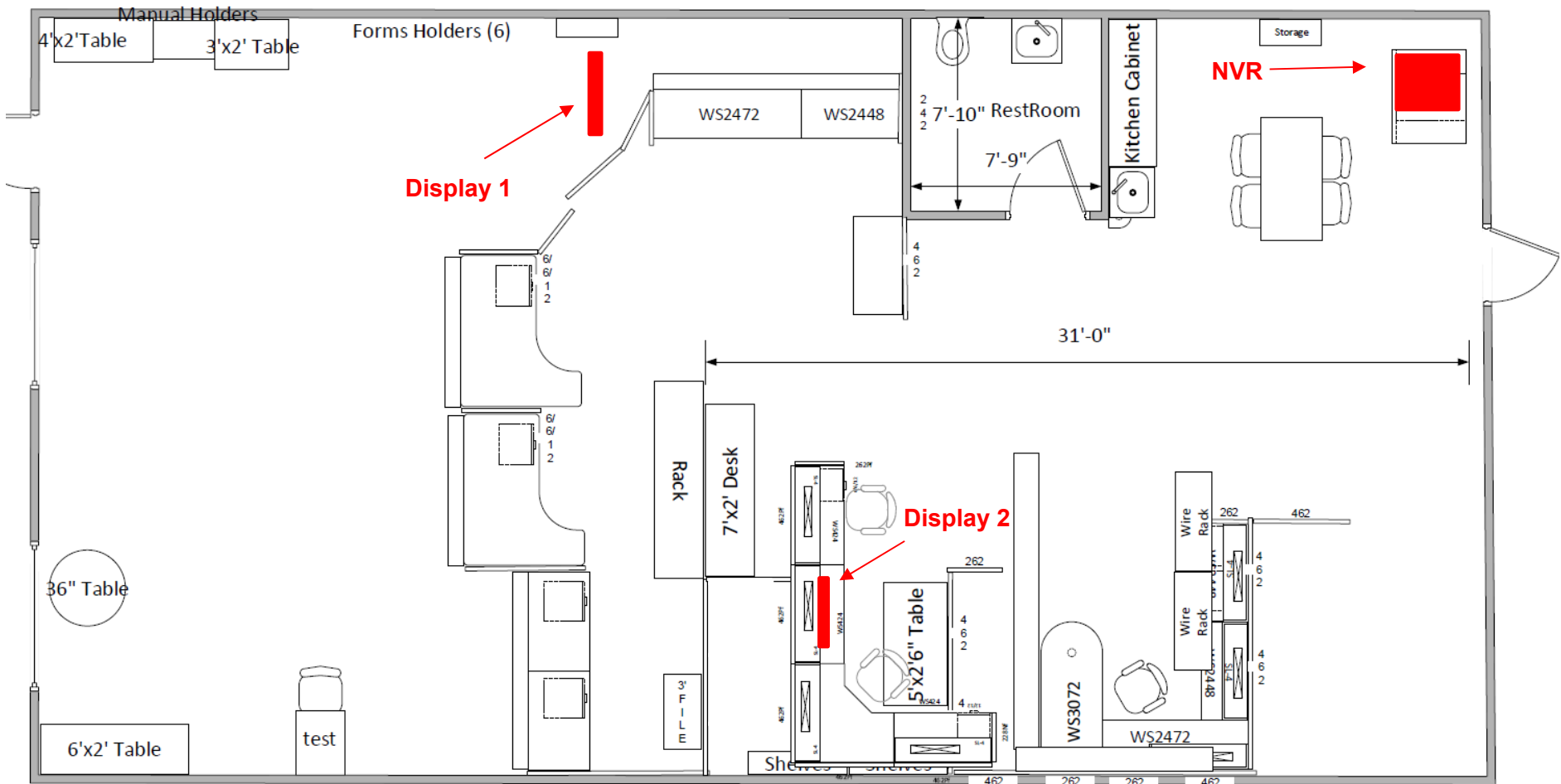
# Monitor Display Locations

**Decoder / Display 1 & 2:** Furnish and install 4 Samsung 32" Class Q50R QLED Smart 4K UHD TV (or approved equal), Mounting Bracket & SPD-151 48CH Network Video Decoder (or approved equal); Display 1 will be located on ceiling w/ decoder; Display 2 will be wall or desk mounted W/ Mini-PC. Add power for each monitor.

**UPS:** Provide and fully install Vertiv Liebert GXT5 UPS 1500VA/1350W 120V for power backup.

**Patch Panel:** Furnish Minimum 24 Port Patch Panel; 4k@60Hz High Speed HDMI Cables as required for complete operating system as noted per specifications.

**Signs:** Provide and install 3 "Notice Video Surveillance In Use On These Premises" signs. Sign 1 on front door; Sign 2 in testing area; Sign 3 behind service counter.



# Camera 6



Model: Hanwha PNF-9010R Resolution: 4K  
HFoV: 360° Distance: 10ft Width: 64.0ft PPF: 120.0  
Imager: 1/1.7" Focal Length: 2.1mm Camera Height: 10.00ft Tilt: 0.00° Scene Height: 10.00ft

Day - Ideal Dark With IR ▾

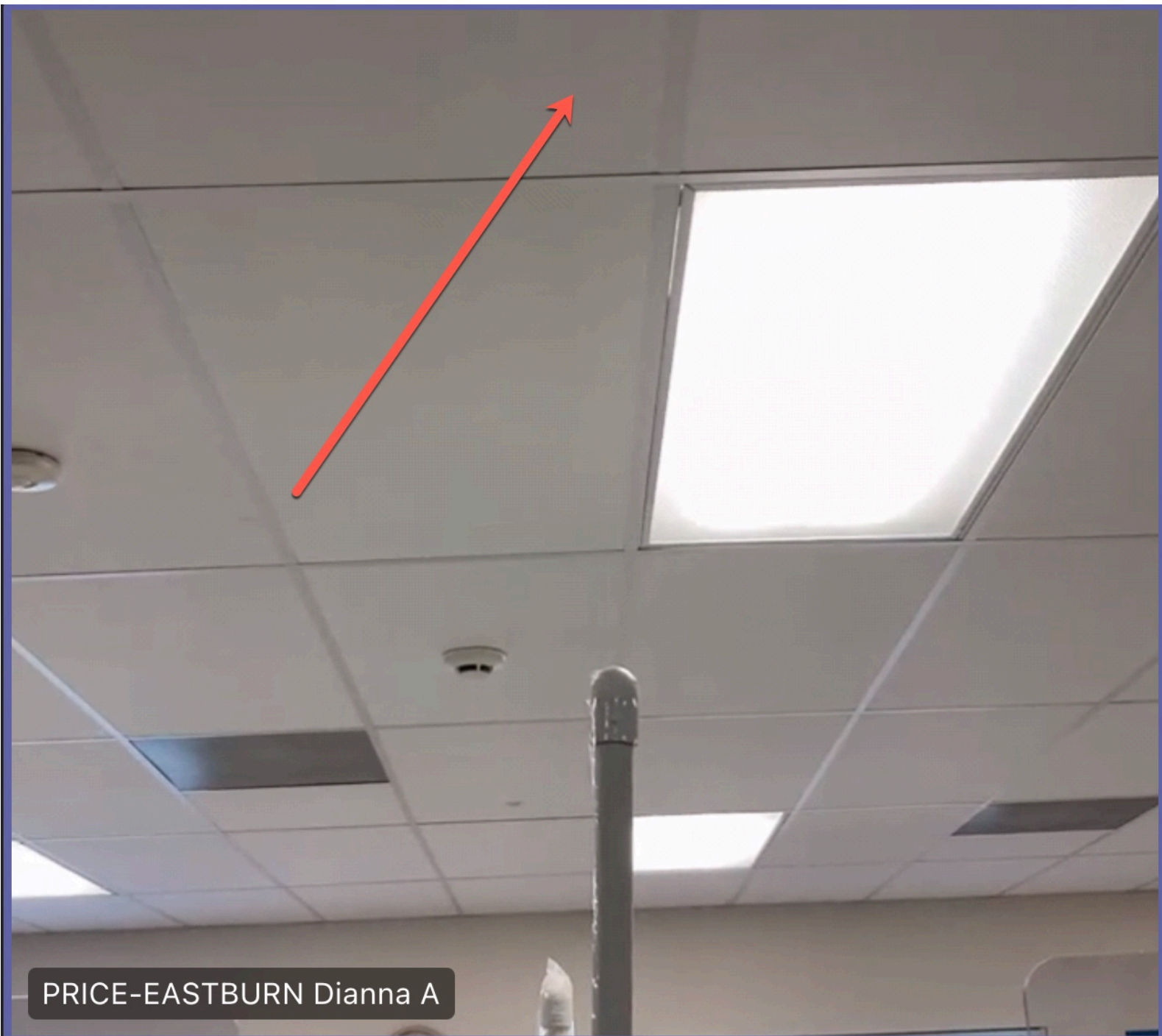
	<p>120.0 ppf 10 ft Away</p> <p><small>Warning results may vary depending on light and camera</small></p>	
--	--	--

# Report Room Camera



PRICE-EASTBURN Dianna A

# Service Counter Camera



PRICE-EASTBURN Dianna A