

Attachment B

**Burns DMV Camera Layout**

**ESB - Burns DMV**

| <b>BID Drawing Camera #</b> | <b>Camera Location</b> | <b>Camera Label</b>    | <b>Camera Type</b> | <b>Accessories</b>                          | <b>Project Notes</b> |
|-----------------------------|------------------------|------------------------|--------------------|---|----------------------|
| 1                           | Customer Parking       | R5_L8240701_CustPark   | PNM-9030V          | Ext.WallMount/VandalCover/<br>Weather Cover | 180 Degree           |
| 2                           | Employee Parking       | R5_L8240701_EmpPark    | PNV-9080R          | Ext.WallMount/VandalCover/<br>Weather Cover | 12 MP                |
| 3                           | Back Parking           | R5_L8240701_BackPark   | PNM-9030V          | Ext.WallMount/VandalCover/<br>Weather Cover | 180 Degree           |
| 4                           | Customer Entrance      | R5_L8240701_CustEntran | XND-9082RV         | Ceiling Mount                               | Fish Eye             |
| 5                           | Report Room            | R5_L8240701_ReportRM   | PNF-9010R          | Ceiling Mount                               | Fish Eye             |
| 6                           | Service Counter        | R5_L8240701_ServCount  | PNF-9010R          | Ceiling Mount                               | Fish Eye             |

# Exterior Overview



# Camera 1



Model: Hanwha PNM-9030V    Resolution: 6096x2540  
HFoV: 180°    Distance: 32ft    Width: 101.6ft    PPF: 60.0  
Imager: 1/2.8"    Focal Length: 4mm    Camera Height: 10.00ft    Tilt: 0.00°    Scene Height: 10.00ft



Day - Ideal

Dark No IR ▾



60.0 ppf  
32 ft  
Away

Warning results may vary depending on light and camera



# Camera 1 Location



PRICE-EASTBURN Dianna A

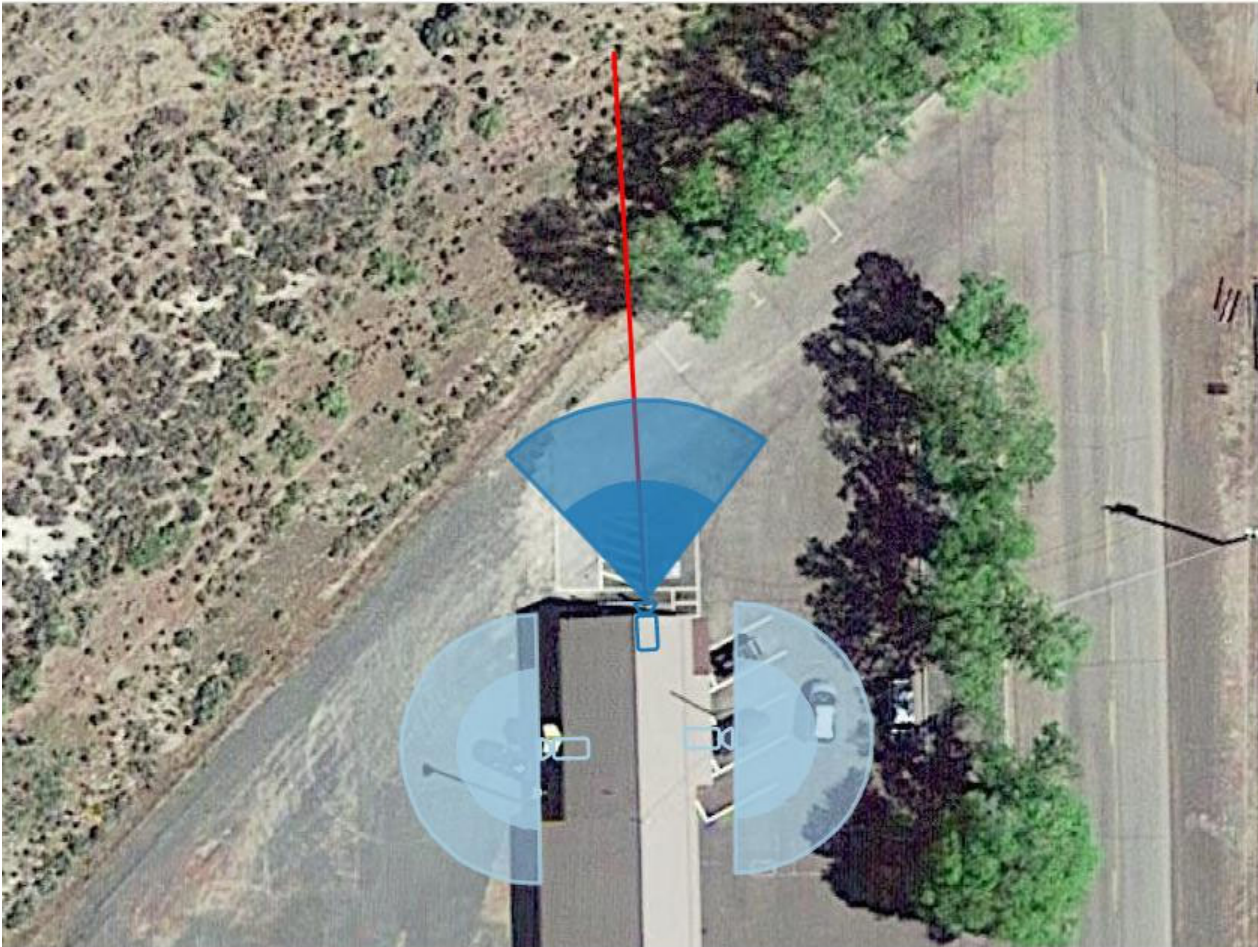
# Camera 2



Model: Hanwha PNV-9080R Resolution: 12MP

HFoV: 80° Distance: 48ft Width: 66.7ft PPF: 60.0

Imager: 1/1.7" Focal Length: 4.5 - 10mm Camera Height: 10.00ft Tilt: 0.00° Scene Height: 10.00ft



Day - Ideal

Dark With IR



60.0 ppf  
48 ft  
Away

Warning results may vary depending on light and camera



# Camera 2 Location



DMV

**The exterior walls are corrugated metal. We will need backer boards for all three outdoor cameras.**

PRICE-EASTBURN Dianna A

# Camera 3



Model: Hanwha PNM-9030V    Resolution: 6096x2540  
HFoV: 180°    Distance: 32ft    Width: 101.6ft    PPF: 60.0  
Imager: 1/2.8"    Focal Length: 4mm    Camera Height: 10.00ft    Tilt: 0.00°    Scene Height: 10.00ft



Day - Ideal

Dark No IR ▾



60.0 ppf  
32 ft  
Away

Warning results may vary depending on light and camera



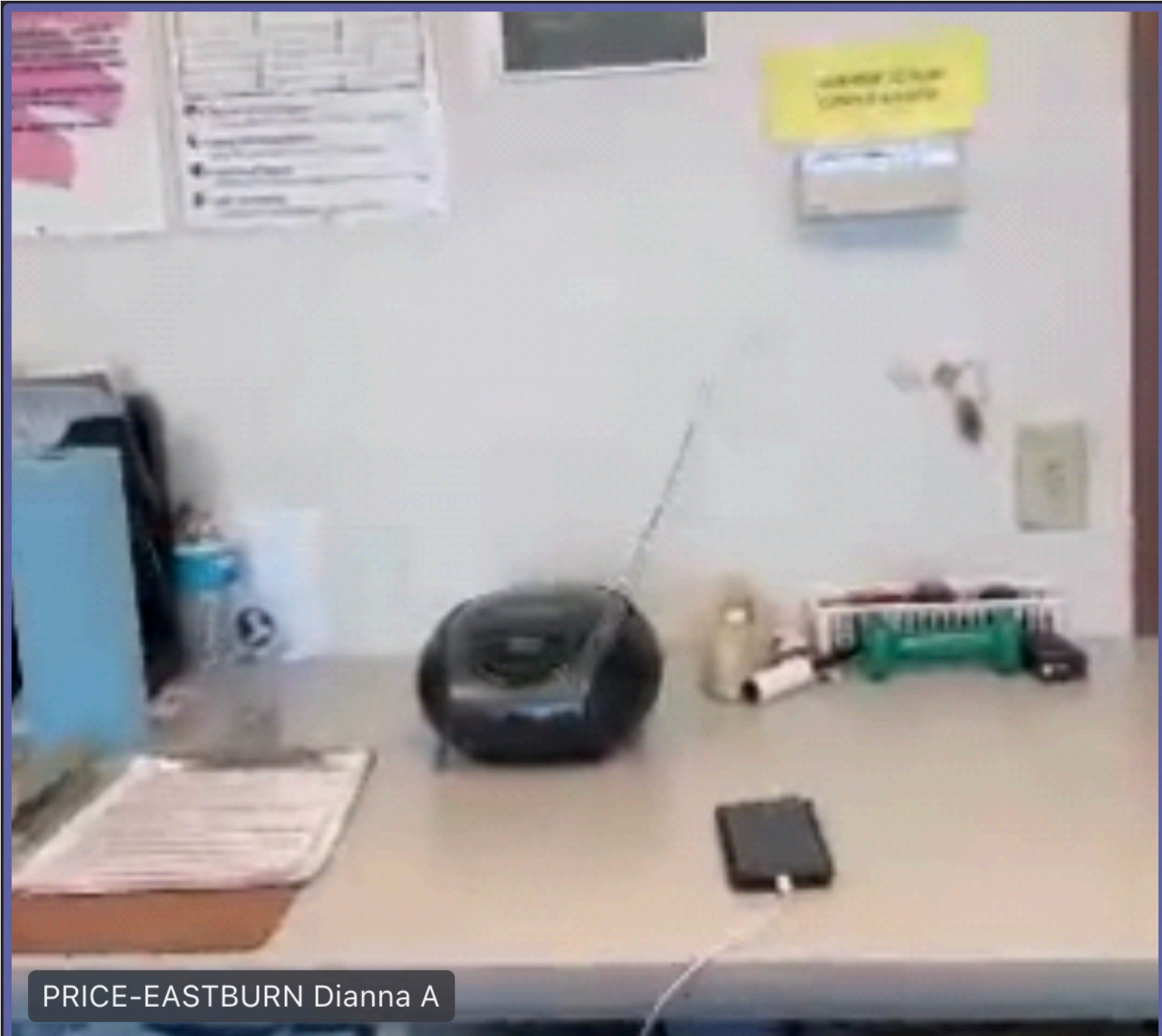
# Camera 3 Location



PRICE-EASTBURN Dianna A



# Monitor Location



PRICE-EASTBURN Dianna A



PRICE-EASTBURN Dianna A

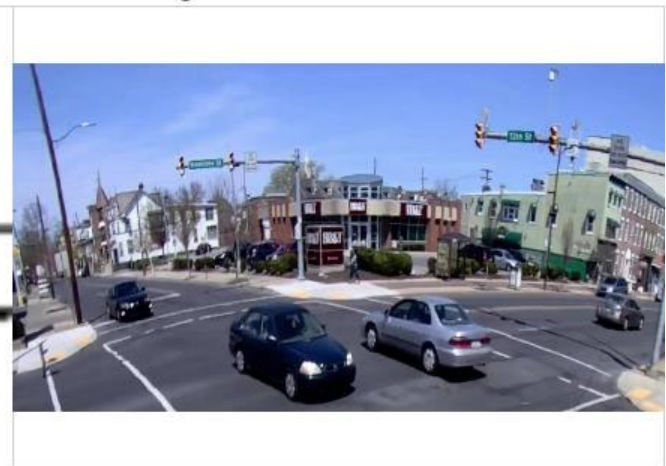
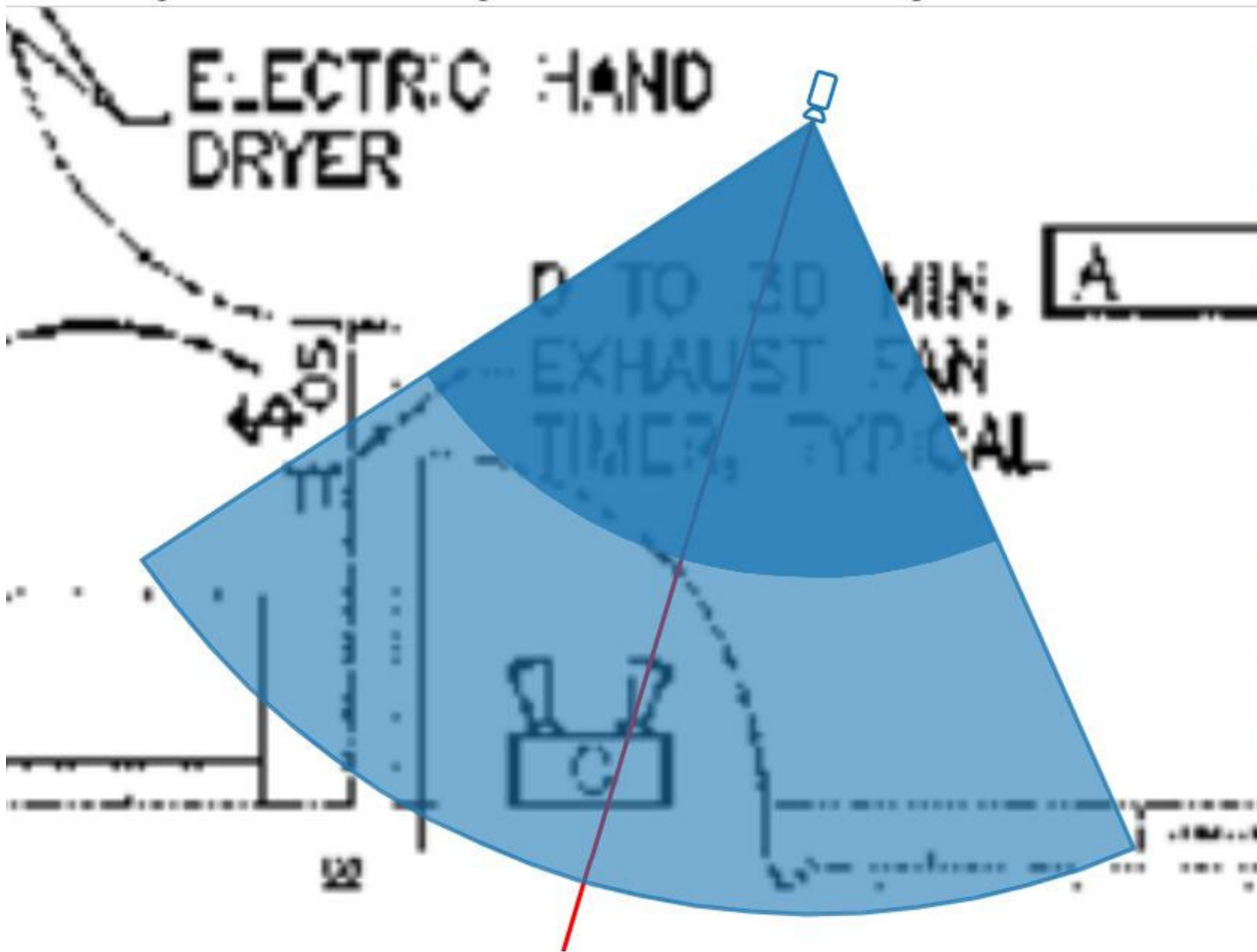
# Camera 4



Model: Hanwha XND-9082RV Resolution: 4K

HFoV: 80° Distance: 48ft Width: 66.7ft PPF: 57.6

Imager: 1/2.8" Focal Length: 2.8 - 8.4mm Camera Height: 10.00ft Tilt: 0.00° Scene Height: 10.00ft



Day - Ideal

Dark With IR



57.6 ppf  
48 ft  
Away

Warning results may vary depending on light and camera



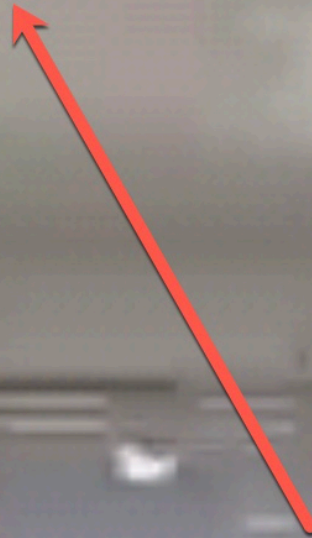
# Pointer Cam Location



PRICE-EASTBURN Dianna A

# Entrance Monitor Location

**The ceilings are very low. We will need to recreate what we did in Lakeview. The mount will have to be installed in the attic.**

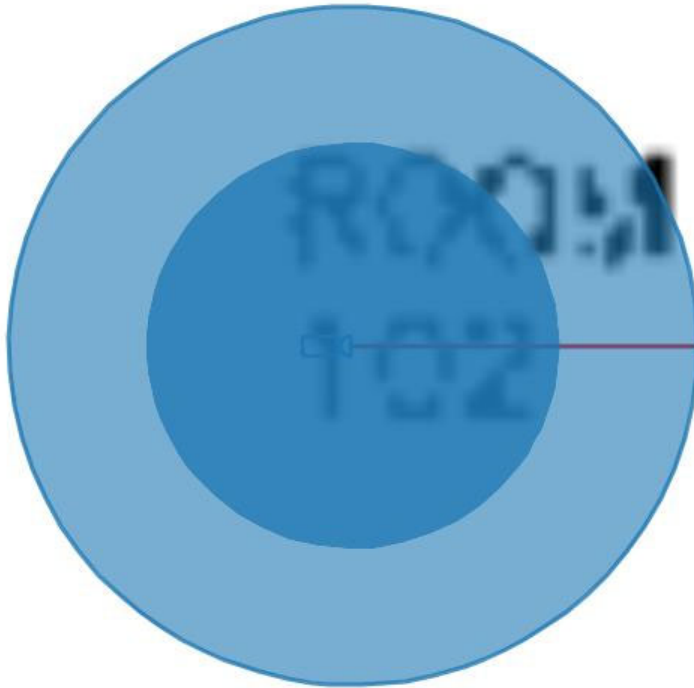


PRICE-EASTBURN Dianna A

# Camera 5



Model: Hanwha PNF-9010R Resolution: 4K  
HFoV: 360° Distance: 10ft Width: 64.0ft PPF: 120.0  
Imager: 1/1.7" Focal Length: 2.1mm Camera Height: 10.00ft Tilt: 0.00° Scene Height: 10.00ft



Day - Ideal

Dark With IR



120.0 ppf  
10 ft  
Away

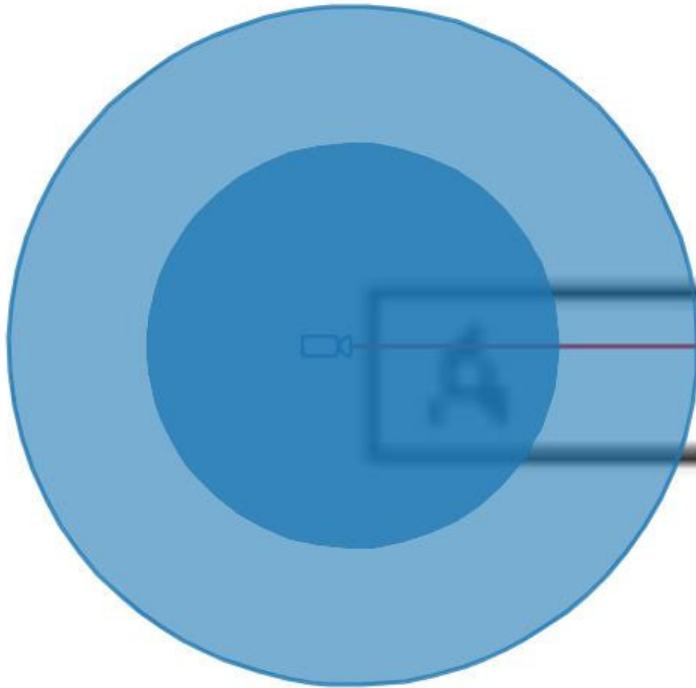
Warning results may vary depending on light and camera



# Camera 6



Model: Hanwha PNF-9010R    Resolution: 4K  
HFoV: 360°    Distance: 10ft    Width: 64.0ft    PPF: 120.0  
Imager: 1/1.7"    Focal Length: 2.1mm    Camera Height: 10.00ft    Tilt: 0.00°    Scene Height: 10.00ft



Day - Ideal

Dark With IR



120.0 ppf  
10 ft  
Away

Warning results may vary depending on light and camera



# Service Counter Location



PRICE-EASTBURN Dianna A

# Monitor Display Locations

**Decoder / Display 1 & 2:** Furnish & install 2 Samsung 32" Class Q50R QLED Smart 4K UHD TV (or approved equal), Mounting Bracket & SPD-151 48CH Network Video Decoder (or approved equal); Display 1 will be located on ceiling w/ decoder; Display 2 will be wall or desk mounted W/ Mini-PC. Add power for each monitor.

**UPS:** Provide and fully install Vertiv Liebert GXT5 UPS 1500VA/1350W 120V for power backup.

**Patch Panel:** Furnish Minimum 24 Port Patch Panel; 4k@60Hz High Speed HDMI Cables as required for complete operating system as noted per specifications.

**Signs:** Provide and install 3 "Notice Video Surveillance In Use On These Premises" signs. Sign 1 on front door; Sign 2 in testing area; Sign 3 behind service counter.

